

CONTRACT NO.: DA00126 WBS ELEMENT: 1CR.10581.17, ETC.

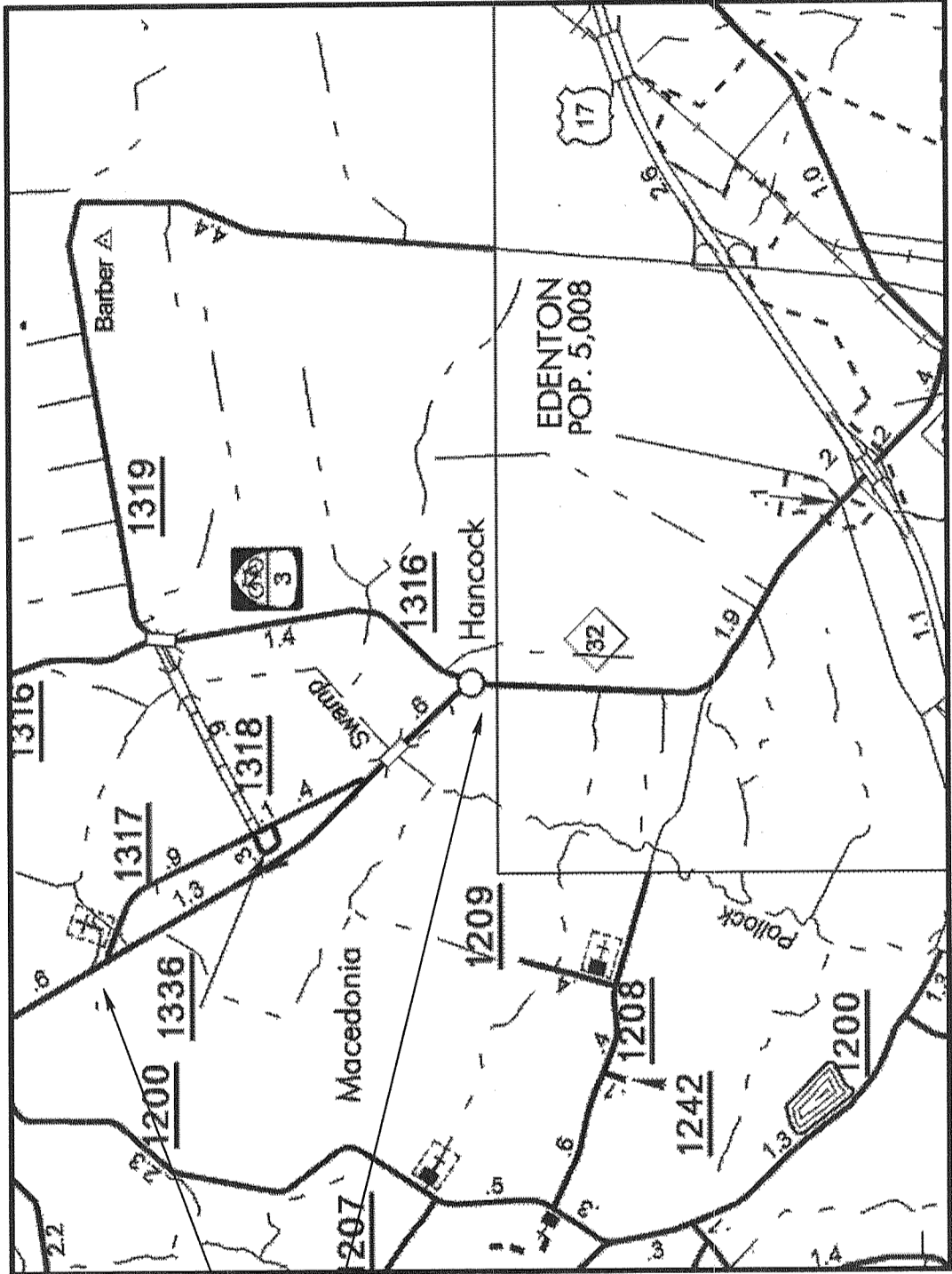
STATE	STATE PROJECT REFERENCE NO.	SHEET NO.	TOTAL SHEETS
N.C.	1CR.10581.17, ETC.	1	11
STATE PROJ. NO.	F.A. PROJ. NO.	DESCRIPTION	

STATE OF NORTH CAROLINA
 DIVISION OF HIGHWAYS
CHOWAN COUNTY

LOCATION: NC 32 .10 MILE SOUTH OF SR1316 TO 100' PASSED SR1317 NORTH END
TYPE OF WORK: MILLIG, OPEN GRADE FRICTION COURSE & LONG LIFE PAVEMENT MARKINGS



NC 32 MAP # 11



Prepared in the Office of
DIVISION OF HIGHWAYS

2012 STANDARD SPECIFICATIONS

LETTING DATE:
 APRIL 18, 2012

W.B. HOBBS, P.E.
 DIVISION PROJECT MANAGER

C.E. SIACHTA
 DIVISION PROPOSALS ENGINEER

PROJECT LENGTH

WBS# 48441.31. = 2.1 MILES

NOT TO SCALE

DIVISION OF HIGHWAYS
 STATE OF NORTH CAROLINA

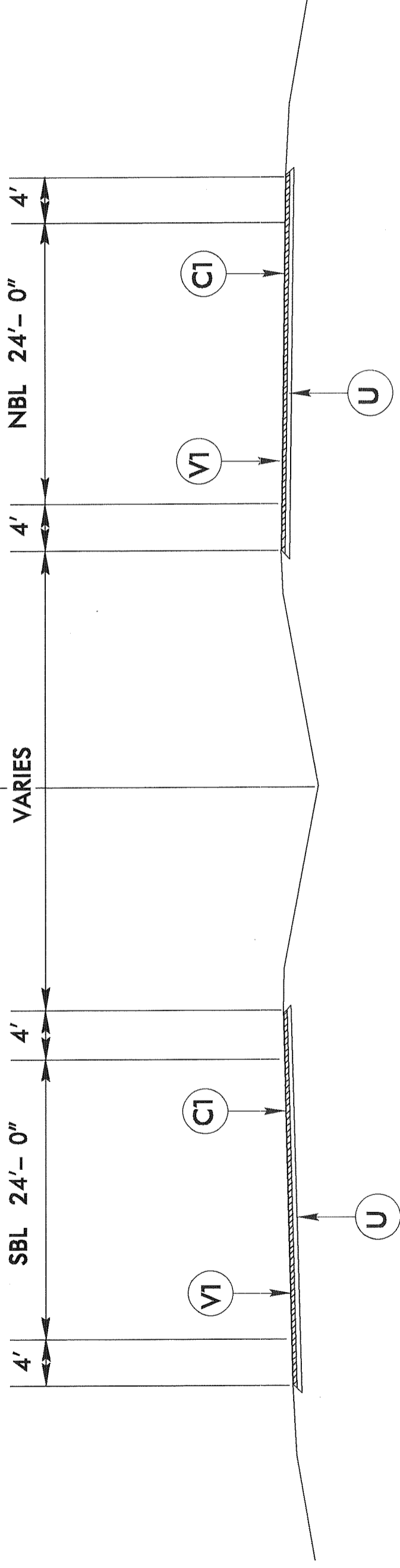
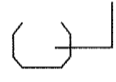


NOTES:

1. ALL PAVED INTERSECTIONS, CROSS OVERTS AND TURN LANES TO BE MILLED AND RESURFACED TO THE ENDS OF THE RADIORS DIRECTED BY THE ENGINEER
2. EDGES, PAVEMENT WIDENING, INTERSECTIONS, AND TURN LANES ARE INCLUDED IN THE SUMMARY OF QUANTITIES
3. PAVEMENT EDGE SLOPES ARE 1:1 UNLESS SHOWN OTHERWISE
4. SHOULDERS AND DITCHES ARE TO BE CONSTRUCTED BY OTHERS

PROJECT REFERENCE NO.	SHEET NO.
1CR.10581.17, ETC.	5 OF 11

PAVEMENT SCHEDULE	
C1	PROP. APPROX. 1.5" ASPHALT CONCRETE SURFACE COURSE TYPE S 9.5B, AT AN AVERAGE RATE OF 168 LBS. PER SQ. YD.
V1	MILLING 1.5"
U	EXISTING PAVEMENT.



TYPICAL SECTION #1

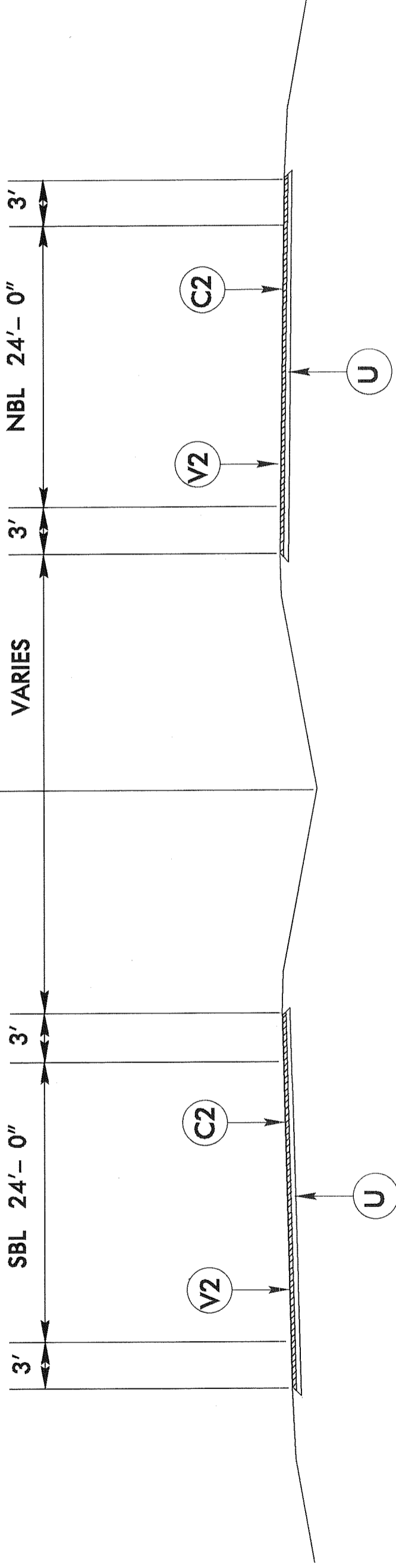
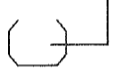
USE WITH MAP 1 & 2

NOTES:

1. ALL PAVED INTERSECTIONS, CROSS OVERS AND TURN LANES TO BE MILLED AND RESURFACED TO THE ENDS OF THE RADIORS DIRECTED BY THE ENGINEER
2. EDGES, PAVEMENT WIDENING, INTERSECTIONS, AND TURN LANES ARE INCLUDED IN THE SUMMARY OF QUANTITIES
3. PAVEMENT EDGE SLOPES ARE 1:1 UNLESS SHOWN OTHERWISE
4. SHOULDERS AND DITCHES ARE TO BE CONSTRUCTED BY OTHERS

PROJECT REFERENCE NO.	SHEET NO.
1CR.10581.17, ETC.	6 OF 11

PAVEMENT SCHEDULE	
C2	PROP. APPROX. 2.0" ASPHALT CONCRETE SURFACE COURSE TYPE S 9.5B, AT AN AVERAGE RATE OF 224 LBS. PER SQ. YD.
V2	MILLING APHALT PAVEMENT DEPTH 2.0"
U	EXISTING PAVEMENT.



TYPICAL SECTION #2

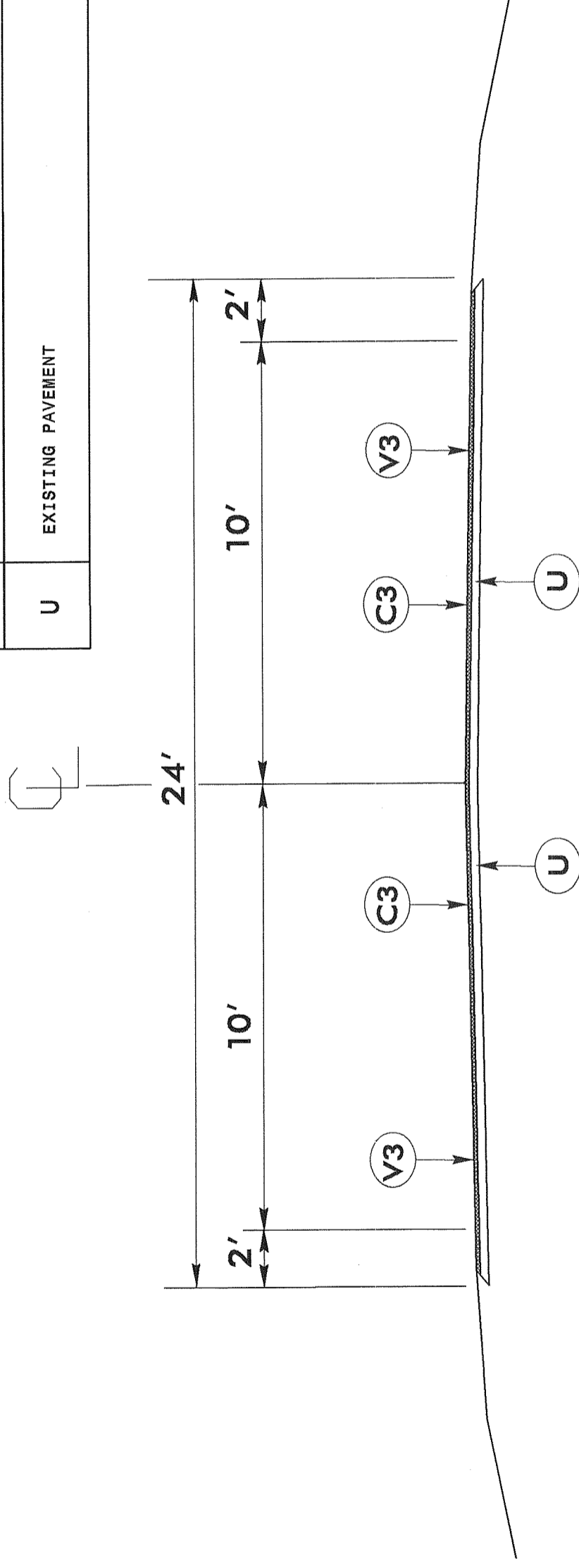
USE WITH MAP 3 & 4

NOTES:

1. ALL PAVED S.R. ROADS TO BE MILLED, RESURFACED TO THE ENDS OF THE RADII OR AS DIRECTED BY THE ENGINEER
2. EDGES, PAVEMENT WIDENING, INTERSECTIONS, AND BRIDGE FLARES ARE INCLUDED IN THE TABLE OF QUANTITIES
3. PAVEMENT EDGE SLOPES ARE 1:1 UNLESS SHOWN OTHERWISE
4. SHOULDERS AND DITCHES ARE TO BE CONSTRUCTED BY OTHERS

PROJECT REFERENCE NO.	SHEET NO.
1CR.10581.17, ETC.	7 OF 11

PAVEMENT SCHEDULE	
C3	PROP. APPROX. 3/4" OPEN-GRADE FRICTION COURSE, TYPE FC 2 MODIFIED AT AN AVERAGE RATE OF 90 LBS. PER SQ.YD.
V3	MILLING ASHALT PAVEMENT DEPTH 3/4"
U	EXISTING PAVEMENT



TYPICAL SECTION #3

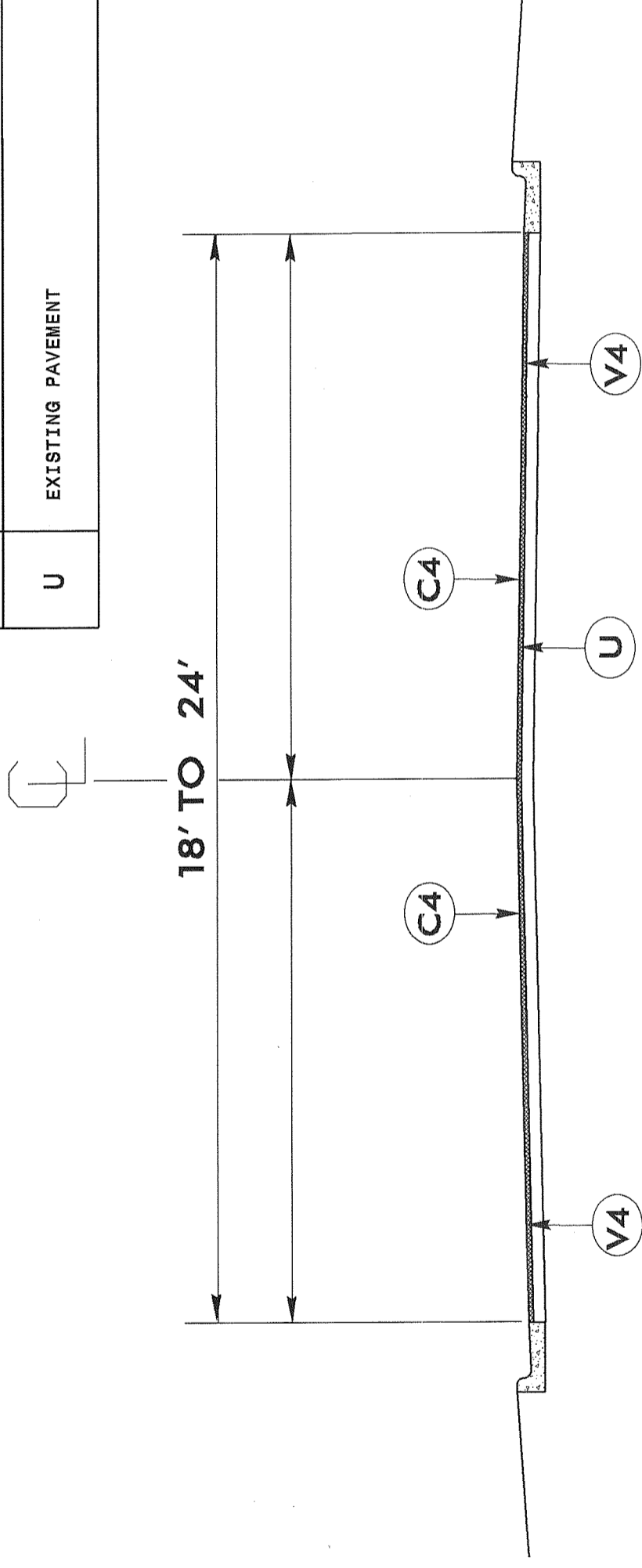
USE WITH MAP 11

NOTES:

1. ALL PAVED S.R. ROADS TO BE MILLED, RESURFACED TO THE ENDS OF THE RADII OR AS DIRECTED BY THE ENGINEER
2. EDGES, PAVEMENT WIDENING, INTERSECTIONS, AND BRIDGE FLARES ARE INCLUDED IN THE TABLE OF QUANTITIES
3. PAVEMENT EDGE SLOPES ARE 1:1 UNLESS SHOWN OTHERWISE
4. SHOULDERS AND DITCHES ARE TO BE CONSTRUCTED BY OTHERS

PROJECT REFERENCE NO.	SHEET NO.
1CR.10581.17, ETC.	8 OF 11

PAVEMENT SCHEDULE	
C4	PROP. APPROX. 1.5" ASPHALT CONCRETE SURFACE COURSE TYPE SF9.5A AT AN AVERAGE RATE OF 165 LBS. PER SQ.YD.
V4	MILLING ASHALT PAVEMENT DEPTH 1.5"
U	EXISTING PAVEMENT



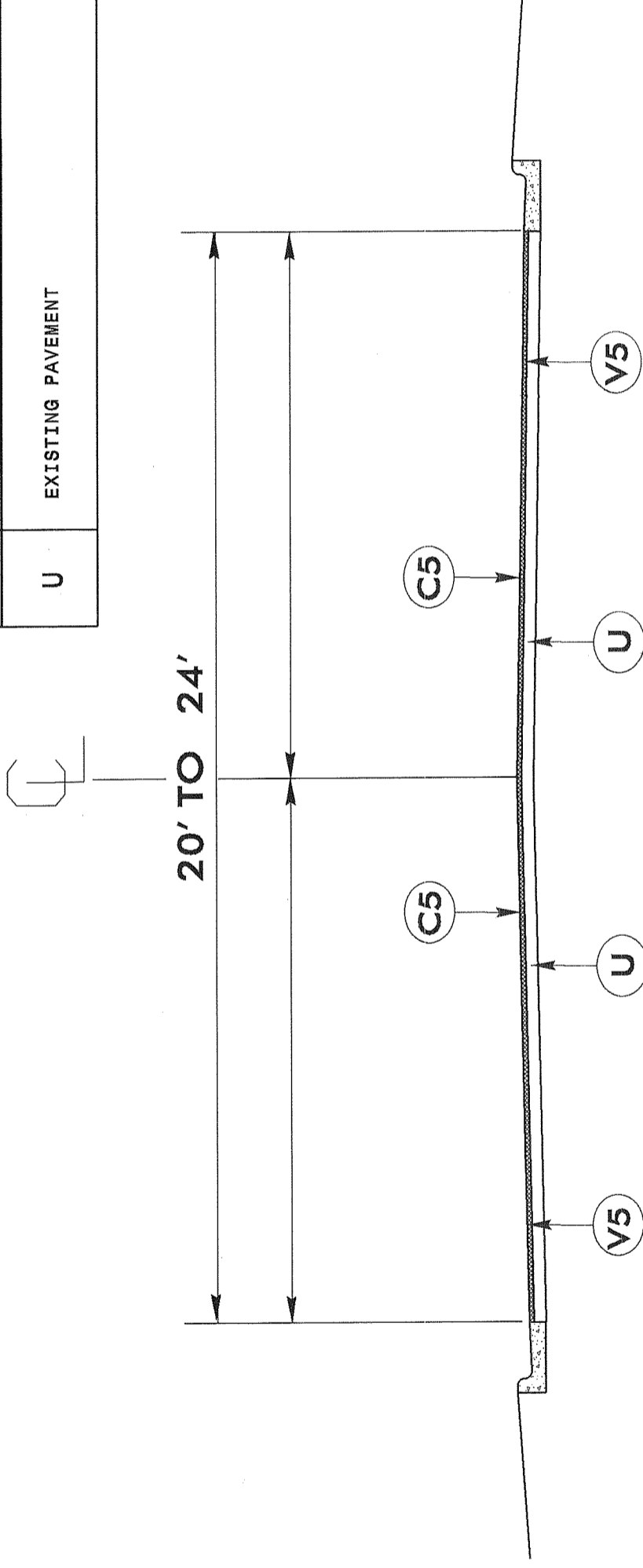
USE WITH MAPS 5, 6 AND 7

NOTES:

1. ALL PAVED S.R. ROADS TO BE MILLED, RESURFACED TO THE ENDS OF THE RADII OR AS DIRECTED BY THE ENGINEER
2. EDGES, PAVEMENT WIDENING, INTERSECTIONS, AND BRIDGE FLARES ARE INCLUDED IN THE TABLE OF QUANTITIES
3. PAVEMENT EDGE SLOPES ARE 1:1 UNLESS SHOWN OTHERWISE
4. SHOULDERS AND DITCHES ARE TO BE CONSTRUCTED BY OTHERS

PROJECT REFERENCE NO.	SHEET NO.
1CR.10581.17, ETC.	9 OF 11

PAVEMENT SCHEDULE	
C5	PROP. APPROX. 2" ASPHALT SURFACE COURSE, TYPE SF 9.5 A AT AN AVERAGE RATE OF 220 LBS. PER SQ. YD.
V5	MILLING ASPHALT PAVEMENT DEPTH 2"
U	EXISTING PAVEMENT



TYPICAL SECTION #5

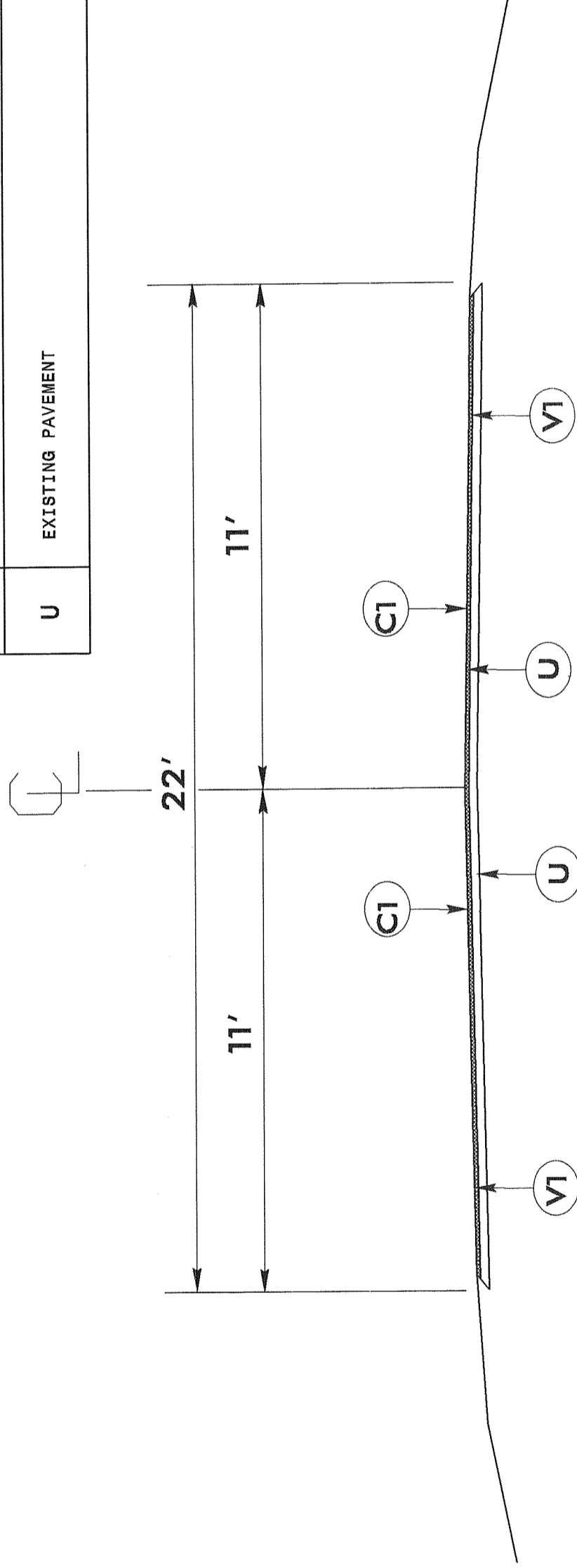
USE WITH MAPS 8 AND 9

NOTES:

1. ALL PAVED S.R. ROADS TO BE MILLED, RESURFACED TO THE ENDS OF THE RADIUS OR AS DIRECTED BY THE ENGINEER
2. EDGES, PAVEMENT WIDENING, INTERSECTIONS, AND BRIDGE FLARES ARE INCLUDED IN THE TABLE OF QUANTITIES
3. PAVEMENT EDGE SLOPES ARE 1:1 UNLESS SHOWN OTHERWISE
4. SHOULDERS AND DITCHES ARE TO BE CONSTRUCTED BY OTHERS

PROJECT REFERENCE NO.	SHEET NO.
1CR.10581.17, ETC.	10 OF 11

PAVEMENT SCHEDULE	
C5	PROP. APPROX. 2" ASPHALT CONCRETE COURSE, TYPE SF 9.5 A AT AN AVERAGE RATE OF 220 LBS. PER SQ.YD.
V5	MILLING ASHALT PAVEMENT DEPTH 2"
U	EXISTING PAVEMENT



TYPICAL SECTION #6

USE WITH MAPS 10

PROJECT NO.	SHEET NO.	TOTAL NO.
1CR.10581.17, ETC	11	11

SUMMARY OF QUANTITIES

PROJECT NO	COUNTY	MAP	ROUTE	DESCRIPTION	TYP	FINAL SURFACE TESTING REQUIRED	LENGTH MI	WIDTH FT	MOBILIZATION LS	1 1/2" MILLING SY	2" MILLING SY	3/4" MILLING SY	SURFACE COURSE, 3/8" TONS	SURFACE COURSE, 3/4" TONS	ASPHALT BINDER FOR PLANT MIX TON	POLYMER MODIFIED ASPHALT BINDER FOR PLANT MIX TON	OGAC, TYPE FC 2 MOD TONS
1CR.10581.17	Martin	1	US 17 SOUTH BOUND LANE	FROM US 64 ALT .70 MILES SOUTH TO NEW PAVEMENT	1	NO	0.7	32	1	15,151			1,416		85		
1CR.10581.17	Martin	2	US 17 NORTH BOUND LANE	NORTH BOUND LANE FROM NEW PAVEMENT TO US 64 ALT	1	NO	0.7	32	*	16,607			1,401		84		
1CR.10581.18	Martin	3	US 13/17 SOUTH BOUND LANE	FROM RONDAKE RIVER BRIDGE SOUTH TO BEGIN NEW PAVEMENT	2	NO	0.81	30	*	15,682	15,682		1,876		113		
1CR.10581.18	Martin	4	US 13/17 NORTH BOUND LANE	FROM NEW PAVEMENT NORTH TO RONDAKE RIVER BRIDGE	2	NO	0.81	30	*	15,682	15,682		1,876		113		
36249.3113	Chowan	5	EAST KING STREET	BETWEEN BROAD AND COLONIAL	4	NO	0.07	24	*	1,084			92		6		
36249.3113	Chowan	6	EAST KING STREET	BETWEEN S OAKUM AND R/R TRACKS	4	NO	0.06	18	*	700			91		6		
36249.3113	Chowan	7	WEST WATER STREET	FROM GRANVILLE TO BROAD STREET	4	NO	0.15	24	*	2,323			193		13		
36249.3113	Chowan	8	SOUTH OAKUM STREET	BETWEEN EAST KINGS STREET AND EAST QUEEN STREET	5	NO	0.15	24	*	2,323	2,323		307		21		
36249.3113	Chowan	9	BLADES CIRCLE	FROM BLADES STREET TO DEAD END	5	NO	0.09	20	*	1,161	1,161		167		11		
36249.3113	Chowan	10	PAXTON LANE	FROM OLD HERTFORD RD FOR .40 MILES	6	NO	0.4	22	*	5,678	5,678		684		46		
43441.3.1	Chowan	11	NC 32 NORTH	NC 32 .10 MILE SOUTH OF SR 1316 TO TO 100' PASSED SR1317 NORTH END	3	NO	2.1	24	*		24,400				67		1,101
GRAND TOTAL																	
							6.04		1	35,865	40,526	24,400	6,569	1,534	498	67	1,101

THERMOPLASTIC AND PAINT QUANTITIES

PROJECT NO	COUNTY	MAP	ROUTE	DESCRIPTION	TEMPORARY TRAFFIC CONTROL	4" X 90 M WHITE THERMO		4" X 120 M WHITE THERMO		THERMO RT ARROW 90 M		THERMO STR & RT ARROW 90 M		THERMO STR & LT ARROW 90 M		4" WHITE POLYUREA		4" YELLOW POLYUREA		CRYSTAL & RED MARKERS		INDUCTIVE LOOP SAWCUT		LEAD-IN CABLE (18-4)		
						LF	EA	LF	EA	EA	EA	EA	EA	EA	EA	EA	EA	EA	EA	EA	EA	EA	EA	EA	EA	EA
1CR.10581.17	Martin	1	US 17 SOUTH BOUND LANE	FROM US 64 ALT .70 MILES SOUTH TO NEW PAVEMENT	1	4,000	3	1,800	3	3	3	3	3	3	3	3	3	3	3	3	3	3	3	3	3	3
1CR.10581.17	Martin	2	US 17 NORTH BOUND LANE	NORTH BOUND LANE FROM NEW PAVEMENT TO US 64 ALT	*	4,000	3	1,800	3	3	3	3	3	3	3	3	3	3	3	3	3	3	3	3	3	
1CR.10581.18	Martin	3	US 13/17 SOUTH BOUND LANE	FROM RONDAKE RIVER BRIDGE SOUTH TO BEGIN NEW PAVEMENT	*	4,710	9	1,200	3	3	3	3	3	3	3	3	3	3	3	3	3	3	3	3	3	
1CR.10581.18	Martin	4	US 13/17 NORTH BOUND LANE	FROM NEW PAVEMENT NORTH TO RONDAKE RIVER BRIDGE	*	4,710	9	1,200	3	3	3	3	3	3	3	3	3	3	3	3	3	3	3	3	3	
36249.3113	Chowan	5	EAST KING STREET	BETWEEN BROAD AND COLONIAL	*																					
36249.3113	Chowan	6	EAST KING STREET	BETWEEN S OAKUM & R/R TRACKS	*																					
36249.3113	Chowan	7	WEST WATER STREET	FROM GRANVILLE STREET TO BROAD STREET	*																					
36249.3113	Chowan	8	SOUTH OAKUM STREET	BETWEEN EAST KINGS STREET AND EAST QUEEN STREET	*																					
36249.3113	Chowan	9	BLADES CIRCLE	FROM BLADES STREET TO DEAD END	*																					
36249.3113	Chowan	10	PAXTON LANE	FROM OLD HERTFORD RD FOR .40 MILES	*																					
43441.3.1	Chowan	11	NC 32 NORTH	NC 32 .10 MILE SOUTH OF SR 1316 TO TO 100' PASSED SR1317 NORTH END	*																					
GRAND TOTAL																										
					1	17,420	34,840	6,000	200	24	12	24	80	24	14	6	21,620	19,220	22,596	13,860	602	2,000	400	36,456	13,860	40,840